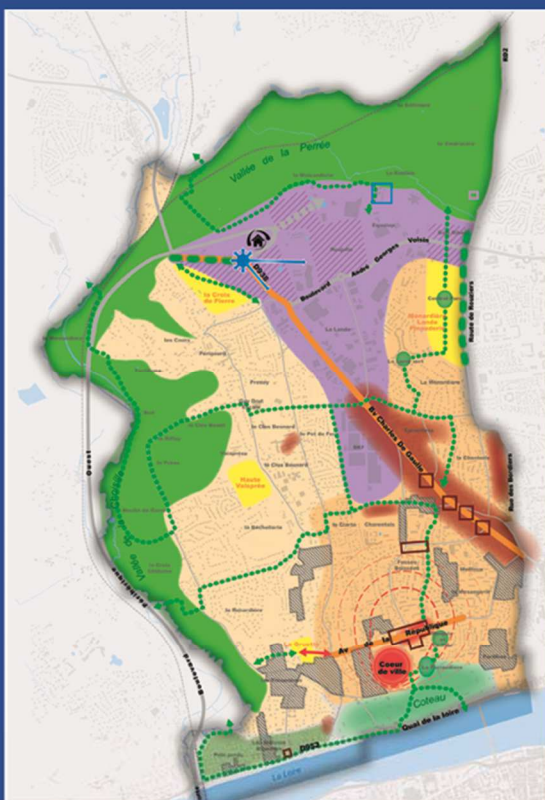


Saint-Cyr-sur-Loire

PLU

PLAN LOCAL D'URBANISME



4. ORIENTATIONS D'AMENAGEMENT ET DE PROGRAMMATION

Modification simplifiée n°2 du PLU

Vu pour être annexé à la délibération du
Conseil métropolitain du 24 février 2025

Pour le Président
Le Vice-Président délégué,


Christian GATARD.

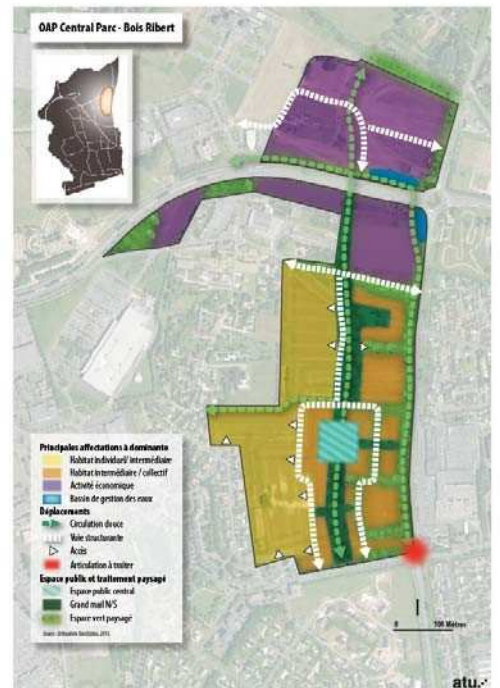
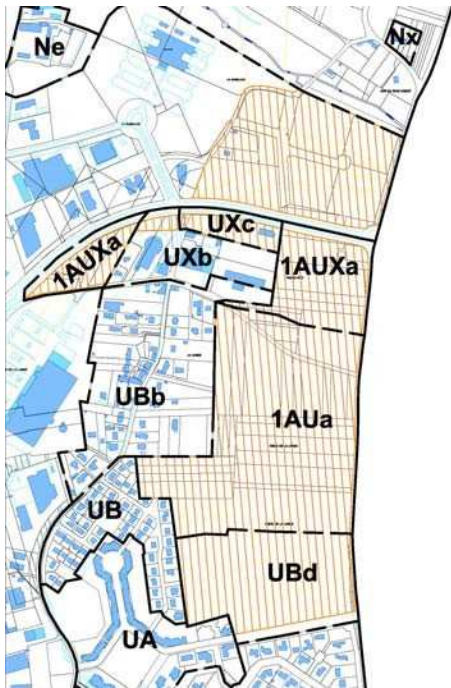
Département de l'Indre-et-Loire


Saint-Cyr-sur-Loire

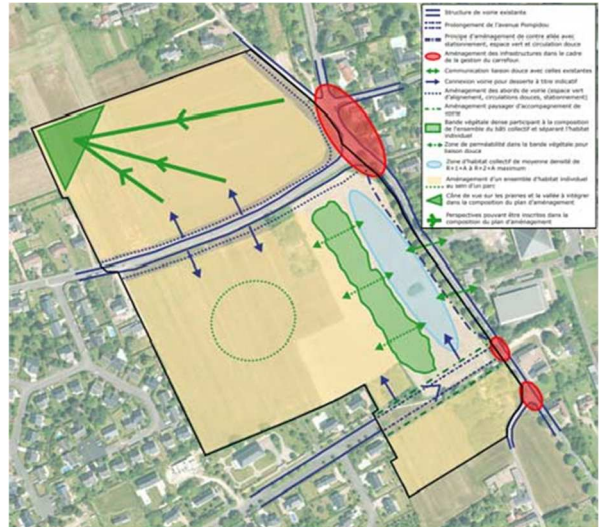
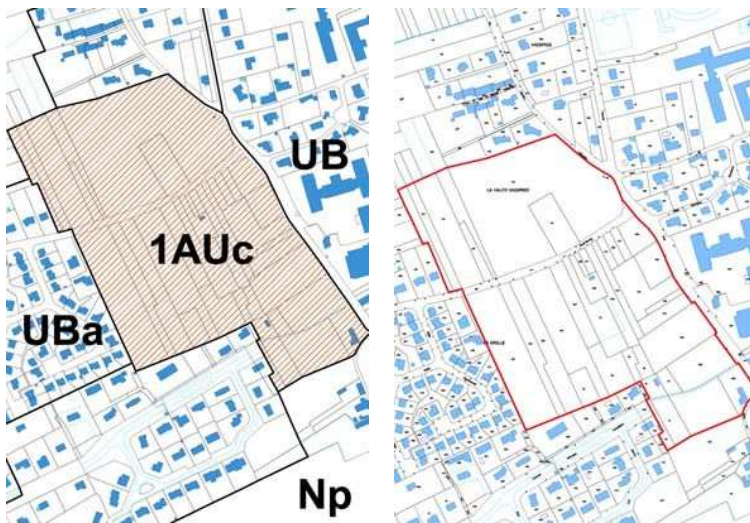
Tours
métropole
Val de Loire

atu.
Agence d'Urbanisme de l'Agglomération de Tours

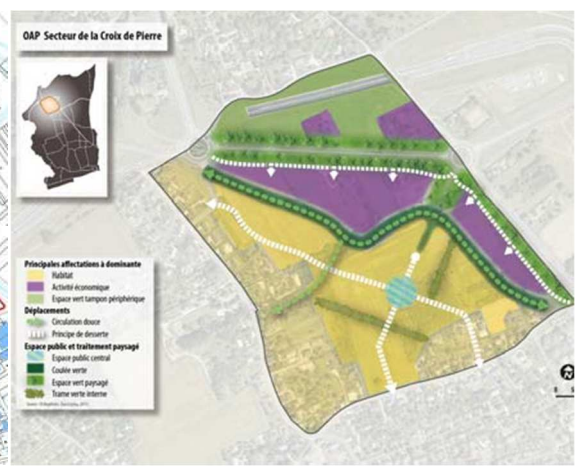
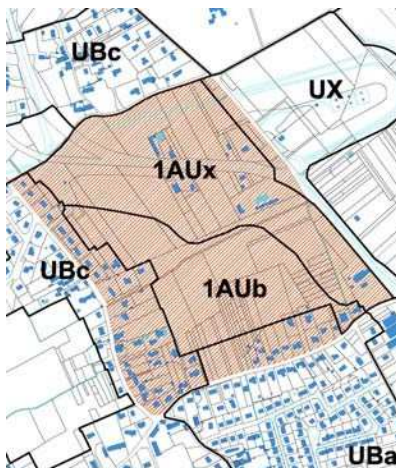
OAP	DATE	ZONAGE DU PLU	DESIGNATION DES OPERATIONS	PARCELLES	SURFACE AVOISINANTE en m ²
2-2018	01 mars 2018	1AUa 1AUxa Ubd UX UXc	Site Central Parc – Bois Ribert	<p>Bois Ribert : AH n°30 (782m²), 31 (1208m²), 32 (2301m²), 33 (109m²), 112 (1548m²), 154 (5231m²), 155 (2634m²), 157 (11382m²), 158 (8293m²), 159 (8261m²), 160 (9607m²), 161 (9 m²), 162 (1121m²), 163 (865m²), 164 (461m²), 166 (8927m²), 168 (11m²), 170 (13m²) et 196 (13105m²) Central Parc : AH n°3 (2885m²), 4 (265m²), 5 (270m²), 6 (1912m²), 7 (570m²), 8 (12560m²), 9 (3350m²), 10 (3350m²), 17 (5797m²), 93 (1267m²), 110 (8103m²), 113 (1043m²), 116 (196m²), 117 (9754m²), 119 (1192m²) et 121 (1429m²) AO n°1 (6351m²), 2 (8824m²), 3 (2223m²), 4 (3500m²), 5 (3068m²), 6 (3039m²), 7 (6321m²), 59 (413m²), 61 (140m²), 63 (140m²) et 493 (87994m²) AN n°21 (2989m²), 22 (1567m²), 23 (4649m²), 24 (1852m²), 25 (2850m²), 26 (11702m²), 27 (3334m²), 28 (5824m²), 29 (7434m²), 30 (1040m²), 31 (4829m²), 32 (1060m²), 33 (832m²), 34 (8281m²), 89 (1440m²), 115 (124m²), 120 (2988m²), 131 (20m²), 148 (1928m²), 151 (539m²), 154 (3m²), 157 (123m²), 160 (1201m²), 162 (514m²), 206 (743m²), 236p (127m²), 238 (143m²) et 242 (3911m²)</p>	325 598 m ²



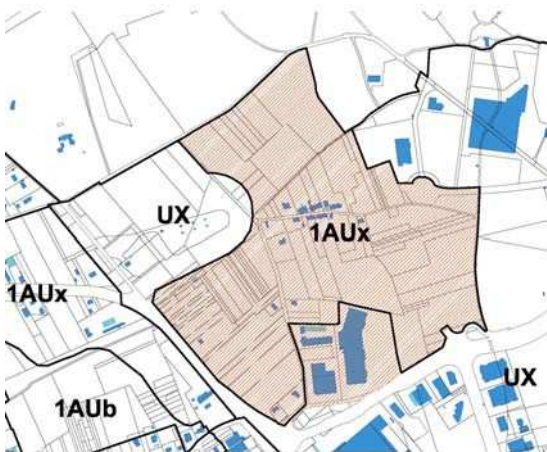
OAP	DATE	ZONAGE DU PLU	DESIGNATION DES OPERATIONS	PARCELLES	SURFACE AVOISINANTE en m ²
3-2018	01 mars 2018	1AUc	Haute Vaisprée : rues de la Haute Vaisprée, du Haut-Bourg et de la Gaudinière Aménagement d'un ensemble d'habitat individuel au sein d'un parc et d'une zone d'habitat collectif, de R+1+A à R+2+A maximum.	BK n°22 (1236m ²), 25 (2329m ²), 27 (3073m ²), 43 (681m ²), 44 (725m ²), 45 (641m ²), 46 (641m ²), 50 (600m ²), 51 (1641m ²), 259 (1212m ²), 261 (6196m ²), 263 (1942m ²), 265 (520m ²), 267 (9311m ²), 269 (222m ²), 271 (367m ²), 273 (1335m ²), 275 (512m ²), 277 (512m ²), 291 (2697m ²), 293 (4098m ²), 297 (2379m ²), 339 (4937m ²), 405 (1806m ²), 407p (4201m ²), 438 (11m ²), 450 (1489m ²), 452 (457m ²), 454 (3358m ²), 456 (1602m ²), 458 (1873m ²) et 460 (3878m ²) BN n°47 (5m ²), 48 (2787m ²), 134p (1765m ²), 147 (904m ²), 151p (5086m ²), 160p (1876m ²), 181p (24992m ²) et 190p (1458m ²)	108 347 m ²



OAP	DATE	ZONAGE DU PLU	DESIGNATION DES OPERATIONS	PARCELLES	SURFACE AVOISINANTE en m ²
4-2018	01 mars 2018	1AUb 1AUx	Site de la Croix de Pierre	<p>BV n°11 (638m²), 12 (906m²), 13 (1119m²), 14 (514m²), 18 (565m²), 20 (31m²), 21 (438m²), 23 (1646m²), 24 (7155m²), 25 (6436m²), 37 (14m²), 38 (62m²), 39 (750m²), 41p (3923m²), 43 (948m²), 44 (1092m²), 45 (836m²), 47 (324m²), 48 (1202m²), 49 (927m²), 50 (757m²), 51 (12754m²), 52 (927m²), 53 (13237m²), 58 (2319m²), 59 (891m²), 60 (301m²), 61 (673m²), 62 (356m²), 63 (735m²), 66 (651m²), 67 (296m²), 68 (580m²), 69 (784m²), 71 (1178m²), 95 (1142m²), 96 (990m²), 97 (10135m²), 98 (514m²), 99 (212m²), 105 (877m²), 106 (550m²), 108 (10927m²), 109 (596m²), 110 (370m²), 111 (260m²), 112 (517m²), 121 (1602m²), 151 (1070m²), 155 (890m²), 157 (1499m²), 159 (2877m²), 164 (342m²), 166 (1550m²), 172 (3348m²), 192 (10096m²), 195 (1293m²), 198 (8880m²), 204 (1501m²), 206 (428m²), 213 (2m²), 214 (307m²), 221 (8558m²), 228 (568m²), 233 (192m²), 246 (2648m²), 247 (1833m²), 248 (11274m²), 253 (4761m²), 254 (2706m²), 255 (20617m²), 257 (5552m²), 260 (2646m²), 264 (3629m²), 266 (2374m²), 268 (541m²), 269 (1551m²), 270 (110m²), 271 (1636m²), 272 (87m²), 273 (880m²), 274 (642m²), 275 (3401m²), 276 (279m²), 278 (1147m²), 291 (269m²), 292 (268m²), 293 (101m²), 294 (29m²), 295 (180m²), 313p (7123m²) et 340 (1353m²)</p> <p>Parcelles hors aménagement futur : BV n°1 (498m²), 2 (884m²), 5 (7308m²), 6 (6649m²), 7 (11713m²), 8 (4588m²), 9 (2053m²), 85 (1912m²), 89 (2875m²), 93 (3148m²), 100 (959m²), 101 (1254m²), 102 (147m²), 113 (1232m²), 117 (2000m²), 118 (2000m²), 126 (1249m²), 128 (1927m²), 129 (1949m²), 135 (4574m²), 142 (1000m²), 143 (1130m²), 146 (90m²), 173 (450m²), 175 (1000m²), 190 (2022m²), 191 (510m²), 199 (727m²), 202 (213m²), 207 (359m²), 209 (45m²), 210 (152m²), 219 (1190m²), 220 (1410m²), 222 (1579m²), 224 (1000m²), 226 (1696m²), 227 (1376m²), 230 (1266m²), 231 (110m²), 232 (646m²), 237 (1035m²), 238 (1030m²), 239 (1134m²), 240 (1124m²), 242 (625m²), 243 (1386m²), 244 (1503m²), 245 (1129m²), 249 (2000m²), 252 (1254m²), 258 (1448m²), 259 (64 m²), 261 (250m²), 286 (1165m²), 287 (1000m²), 288 (5m²), 289 (183m²), 290 (1588m²), 300 (110m²), 301 (550m²), 302 (364m²), 303 (4170m²), 304 (52m²), 305 (906m²), 306 (206m²), 307 (1606m²), 308 (459m²), 309 (602m²), 311 (851m²), 312 (1046m²), 321 (988m²), 322 (1034m²), 323 (1091m²), 324 (895m²), 325 (1107m²), 326 (905m²), 337 (55m²), 338 (404m²) et 339 (1305m²)</p>	205 026 m ²



OAP	DATE	ZONAGE DU PLU	DESIGNATION DES OPERATIONS	PARCELLES	SURFACE AVOISINANTE en m ²
5-2018	01 mars 2018	1AUX UX	Site de la Roujolle	<p>AK n°7 (24346m²), 11 (14864m²), 12 (1126m²), 13 (1262m²), 14 (530m²), 15 (1787m²), 16 (1478m²), 17 (7995m²), 18 (428m²), 19 (1059m²), 20 (8289m²), 63 (309m²), 64 (3469m²), 66 (5680m²) et 77 (178m²)</p> <p>AL n°1 (12600m²), 2 (3225m²), 3 (1499m²), 3 (1499m²), 4 (2225m²), 5 (1227m²), 6 (5515m²), 7 (12128m²), 8p (1708m²), 9p (4236m²), 10 (459m²), 11 (493m²), 12 (493m²), 15 (8090m²), 16 (741m²), 17 (2913m²), 18 (4095m²), 19 (542m²), 20 (306m²), 21 (567m²), 22 (3300m²), 23 (1691m²), 24 (2847m²), 25 (3679m²), 26 (18362m²), 29 (4757m²), 32 (925m²), 33 (999m²), 34 (2435m²), 39 (433m²), 40 (5443m²), 59 (546m²), 60 (1418m²), 61 (1615m²), 62 (4778m²), 63 (1773m²), 64 (2918m²), 65 (862m²), 66 (697m²), 67 (366m²), 68 (1270m²), 69 (412m²), 70 (412m²), 71 (1902m²), 73 (1035m²), 74 (664m²), 75 (2620m²), 76 (3745m²), 77 (1369m²), 78 (982m²), 79 (486m²), 80 (1447m²), 81 (768m²), 82 (767m²), 83 (1071m²), 84 (4873m²), 87 (1542m²), 88p (1597m²), 100 (2873m²), 103 (2576m²), 113p (313m²), 114p (3704m²), 116 (1000m²), 117 (8062m²), 118 (2281m²), 119 (3116m²), 120 (233m²), 121 (5522m²), 126 (1879m²), 128 (1000m²), 133 (665m²), 134 (650m²), 135 (341m²), 136 (381m²), 137 (659m²), 138 (350m²), 139 (236m²), 149 (8195m²), 150 (138m²), 151 (11069m²), 159 (4919m²), 161 (6894m²), 163 (9621m²), 165 (41m²), 171 (704m²), 263 (962m²), 265 (628m²), 267 (36m²), 269 (109m²), 275 (312m²), 292 (5362m²), 293 (337m²), 294p (53m²), 296p (1087m²), 300p (14210m²), 319 (932m²), 322 (2265m²), 326 (3031m²), 327 (1827m²), 328 (1249m²) et 329 (5170m²)</p> <p><u>Parcelles hors aménagement futur :</u> AL n°36 (7830m²), 101 (2000m²), 102 (5408m²) et 295 (25593m²)</p>	270 667 m ²



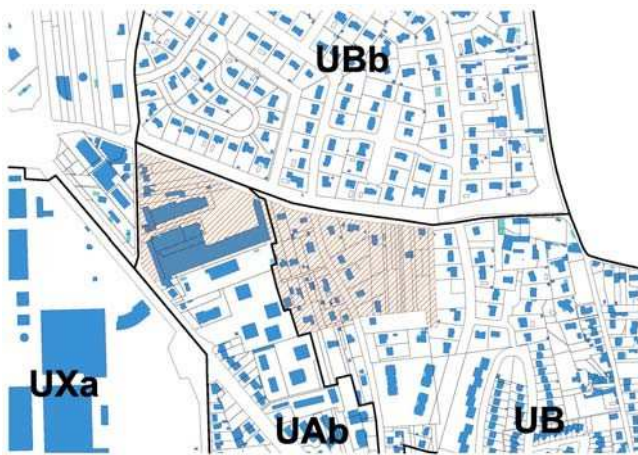
OAP	DATE	ZONAGE DU PLU	DESIGNATION DES OPERATIONS	PARCELLES	SURFACE AVOISINANTE en m ²
6-2018	01 mars 2018	1AUd	La Gruette Aménagement d'habitat individuel et de petits collectifs de R+1+A à R+2+A maximum	BC n°43 (2652m ²), 51 (3014m ²), 52 (701m ²), 53 (824m ²), 54 (1177m ²), 55 (2847m ²), 56 (886m ²), 57 (5045m ²), 295 (601m ²)	17 747 m ²



OAP	DATE	ZONAGE DU PLU	DESIGNATION DES OPERATIONS	PARCELLES	SURFACE AVOISINANTE en m ²
7-2018	01 mars 2018	UBc UXb	Site de la ZAC Charles de Gaulle	BP n°23 (1224m ²), 24 (1018m ²), 25 (1119m ²), 26 (65m ²), 27 (1045m ²), 212 (8043m ²), 699 (809m ²) et 701 (13584m ²) <u>Parcelles hors aménagement futur :</u> BP n°22 (693m ²), 698 (269m ²) et 700 (5233m ²)	26 907 m ²



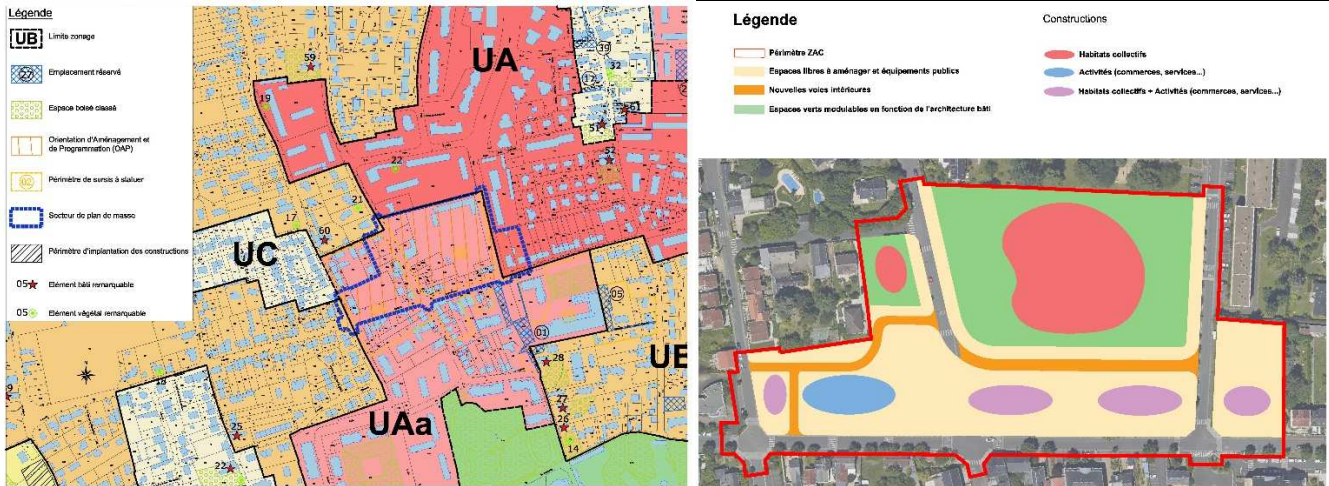
OAP	DATE	ZONAGE DU PLU	DESIGNATION DES OPERATIONS	PARCELLES	SURFACE AVOISINANTE en m ²
8-2018	01 mars 2018	UAb UB	Rues de la Ménardière et des Epinettes. Aménagement de collectifs de R+1+A à R+1+C au sein d'un parc et de R+2+A à R+2+C.	<p>AP n°14 (308m²), 15 (542m²), 16 (1391m²), 17 (1104m²), 18 (544m²), 19 (254m²), 21 (1097m²), 25 (570m²), 26 (1463m²), 29 (700m²), 34 (466m²), 35 (1855m²), 36 (719m²), 37 (1015m²), 168 (18 m²), 200 (286m²), 202 (1228m²), 204 (281m²), 211 (1420m²), 217 (573m²), 225 (1883m²), 227 (5232m²), 229 (64m²), 232 (1591m²), 240 (5963m²), 241 (263m²), 242 (132m²), 243 (1147m²), 244 (538m²), 245 (730m²), 246 (10m²), 248 (774m²), 249 (103m²), 254 (922m²), 255 (921m²), 260 (237m²), 261 (1163m²), 309 (490m²), 313 (449m²), 314 (103m²), 315 (303m²), 317 (248m²), 339 (293m²), 368 (1137m²) et 369 (222m²)</p> <p>AR n°1 (1519m²), 2 (1563m²), 4 (1506m²), 5 (420m²), 6 (369m²), 7 (380m²), 8 (373m²), 9 (404m²), 10 (1624m²), 11 (764m²), 12 (695m²), 13 (425m²), 14 (422m²), 15 (1242m²), 16 (1351m²), 293 (1575m²), 294 (1536m²), 295 (1683m²), 1002 (673m²), 1003 (601m²), 1004 (1044m²), 1005 (477m²), 1008 (356m²) et 1009 (340m²)</p>	64 308 m²



OAP	DATE	ZONAGE DU PLU	DESIGNATION DES OPERATIONS	PARCELLES	SURFACE AVOISINANTE en m ²
9-2018	01 mars 2018	UB	Rue de la Chanterie. Aménagement d'habitat mixte au sein d'un parc.	AR n°90 (1066m ²), 91 (531m ²), 92p (632m ²), 93p (344m ²), 98 (510m ²), 99 (245m ²), 100 (791m ²), 114 (1006m ²), 115 (562m ²), 116 (2175m ²), 306 (700m ²), 307p (334m ²) et 313 (2186m ²)	11 082 m²



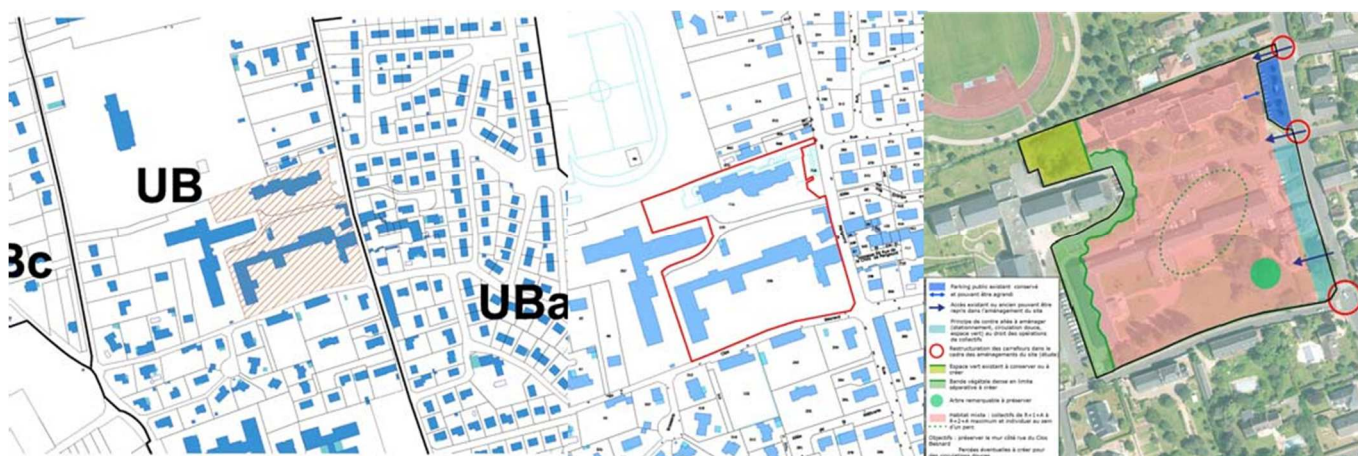
OAP	DATE	ZONAGE DU PLU	DESIGNATION DES OPERATIONS	PARCELLES	SURFACE AVOISINANTE en m ²
10-2018	01 mars 2018	UA (secteurs UAa et UA strict)	République-Jean Moulin pour la requalification urbaine en vue d'un aménagement d'ensemble regroupant de l'habitat collectif de R+2+A à R+3+A et des activités.	AS n° 185, 186, 278, 282, 283, 284, 286, 287, 288, 289, 290, 291, 292, 294, 295, 296, 297, 298, 299, 300, 302, 303, 304, 307, 308, 309, 413, 414, 415, 531, 532, 687, 688, 783, 784, 836, 863, 864, 865, 866, 888, 889 et 904p	33 000 m²



OAP	DATE	ZONAGE DU PLU	DESIGNATION DES OPERATIONS	PARCELLES	SURFACE AVOISINANTE en m ²
11-2018	01 mars 2018	UB	Rue du Coq. Aménagement d'un ensemble de petits collectifs de R+1+A à R+2+A au sein d'un parc.	AZ n°209 (15260m ²)	15 260 m ²



OAP	DATE	ZONAGE DU PLU	DESIGNATION DES OPERATIONS	PARCELLES	SURFACE AVOISINANTE en m ²
12-2018	01 mars 2018	UB	Rue de la Croix de Périgourd – Pôle Confluence Santé. Aménagement d'habitat mixte individuel et collectifs de R+1+A à R+2+A maximum au sein d'un parc	BO 708 (13564m ²), 710 (995m ²) et 715 (6015m ²)	20 574 m ²



OAP	DATE	ZONAGE DU PLU	DESIGNATION DES OPERATIONS	PARCELLES	SURFACE AVOISINANTE en m ²
13-2018	01 mars 2018	Nx	Site de la Vindrinière	AH n°62 (284m ²), 64 (21m ²), 126 (1269m ²), 127 (333m ²), 130 (645m ²) et 131 (808m ²)	3 360 m ²

